

Stata installation guide for Windows



This program license is valid until January 5, 2026

Table of contents

01

Request Program

Page 1-3

02

Installation Procedure

Page 4-11

03

License Procedure

Page 12-14


1. Request Program



1. Go to the library website <https://library.md.chula.ac.th/> Click on Stata

1. Request Program

Today's Hours: 08:00 – 24:00 hours

 **MDCU Library**
Faculty of Medicine, Chulalongkorn University

CUML1 Off-Campus Login Account Login for our e-Resources

STATA 18.5

โปรแกรม STATA จัดซื้อโดยฝ่ายวิจัย คณะแพทยศาสตร์ จุฬาลงกรณ์มหาวิทยาลัย
ให้บริการเฉพาะประชาคมคณะแพทยศาสตร์ จุฬาลงกรณ์มหาวิทยาลัย เท่านั้น

- **Request Program Stata**
- [Consultation for Stata](#)

User Guide

- [Installation of Stata for Mac \(Thai\)](#)
- [Installation of Stata for Mac \(Eng\)](#)
- [Installation of Stata for Windows \(Thai\)](#)
- [Installation of Stata for Windows \(Eng\)](#)

For more information, please, contact at Research Affairs Office, Anandamahidol Building 3rd Floor
Tel. 0-2256-4455, 0-2256-4466 extension 21
e-mail: mdcuresearch@chula.ac.th / researchaffairs@gmail.com / mdcuresearch@gmail.com

2. Click on Request Program Stata

1. Request Program

3. Fill out the Request

Program Stata questionnaire to request a link to download the program **Serial number, Code, Authorization** to be used to install the program

*Download via IP Faculty connected LAN cable only.

แบบกรอกข้อมูลเพื่อขอใช้โปรแกรม STATA
สงวนสิทธิ์สำหรับประชาคม คณะแพทยศาสตร์
เท่านั้น

Request form using Stata program. Reserves for MDCU member only

yuwapa.rr@gmail.com [Switch account](#)

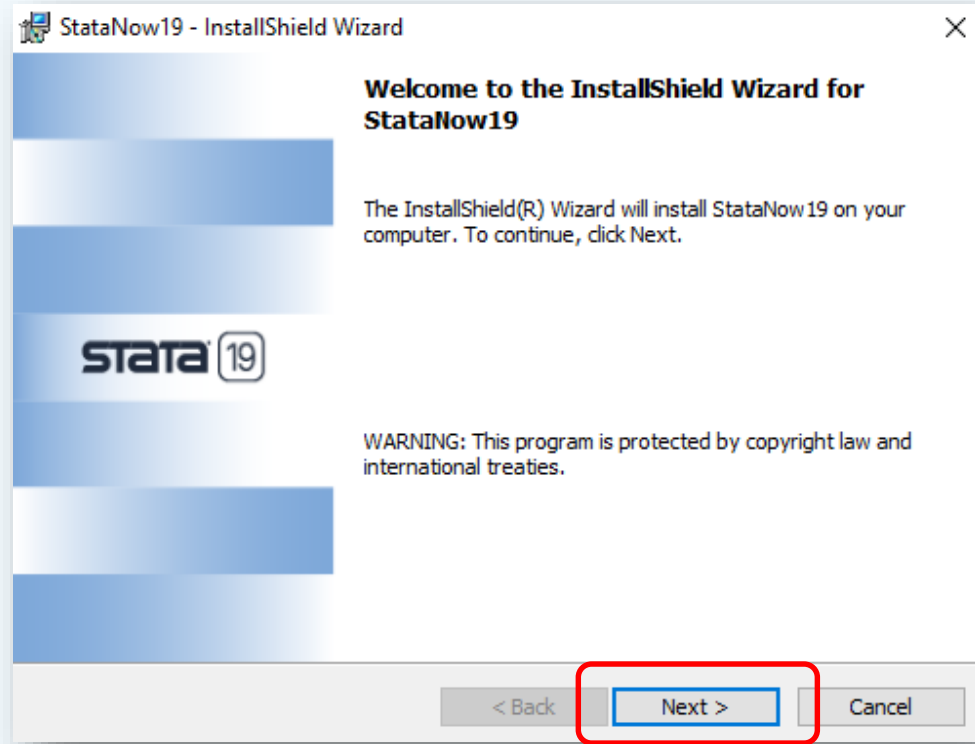
Not shared

* Indicates required question

1. ชื่อ-สกุล (ภาษาไทย)

Your answer

2. Installation Procedure



4. Close other programs and **click on Next** to begin the setup.

2. Installation Procedure

5. Enter your name and your company or organization, and choose anyone who uses this computer (all users)

6. Then click on Next.

StataNow18 - InstallShield Wizard

Customer Information

Please enter your information.

STATA

User Name:
[Text Input Field]

Organization:
[Text Input Field]

Anyone who uses this computer (all users)
 Only for me (LIBRARY_1)

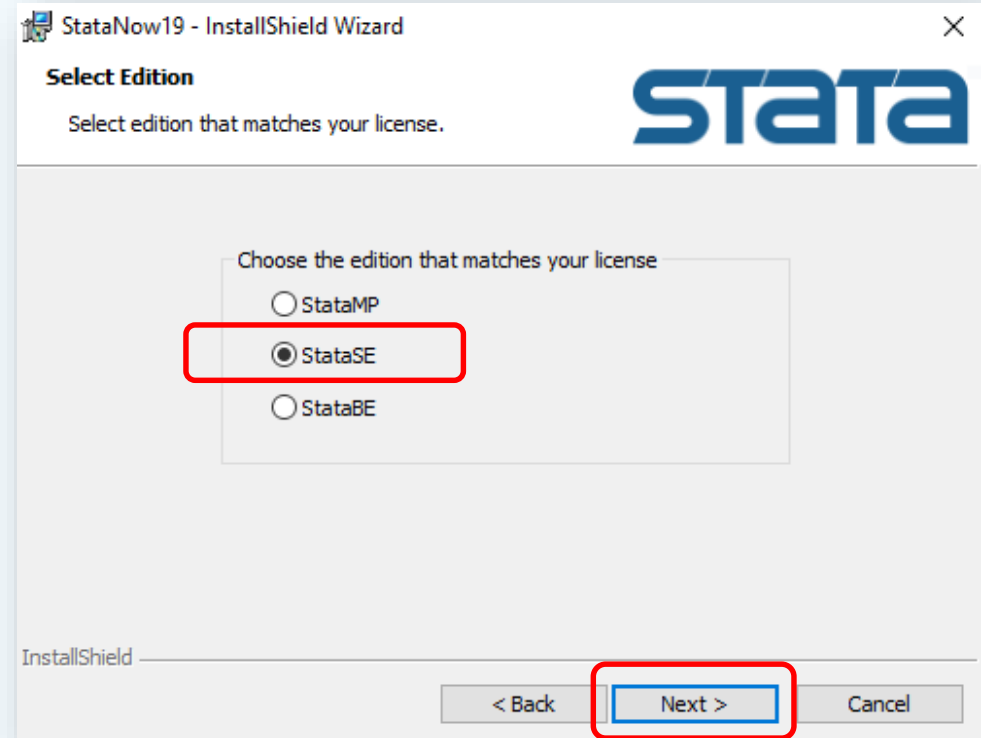
InstallShield

< Back Next > Cancel

2. Installation Procedure

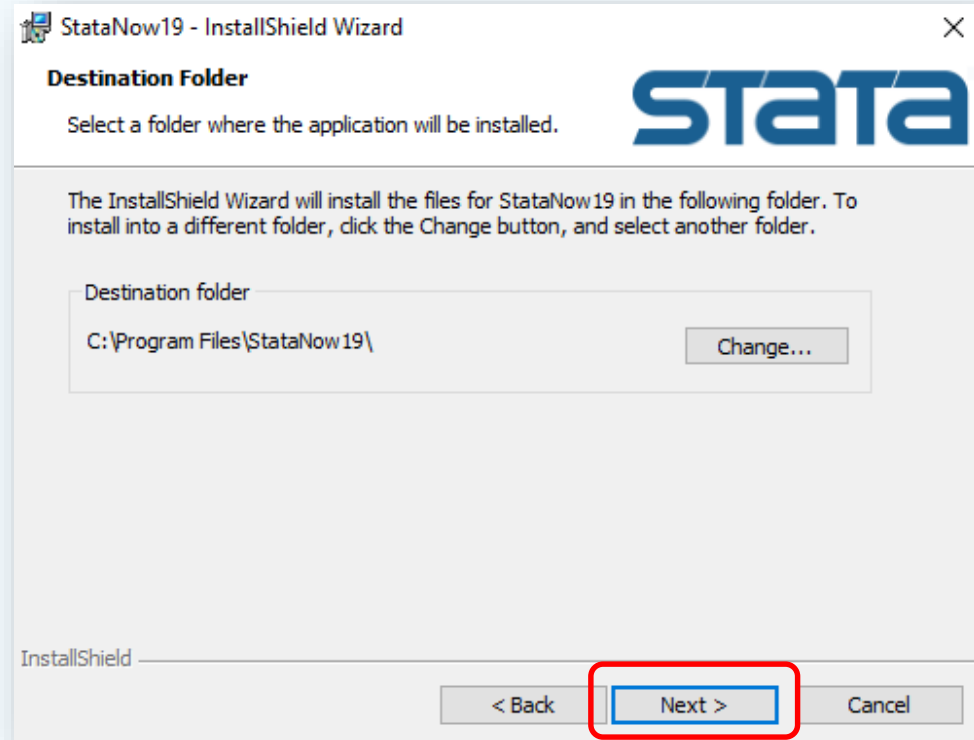
7. Select the type and edition of StataNow/SE to install next

8. And click on Next.



2. Installation Procedure

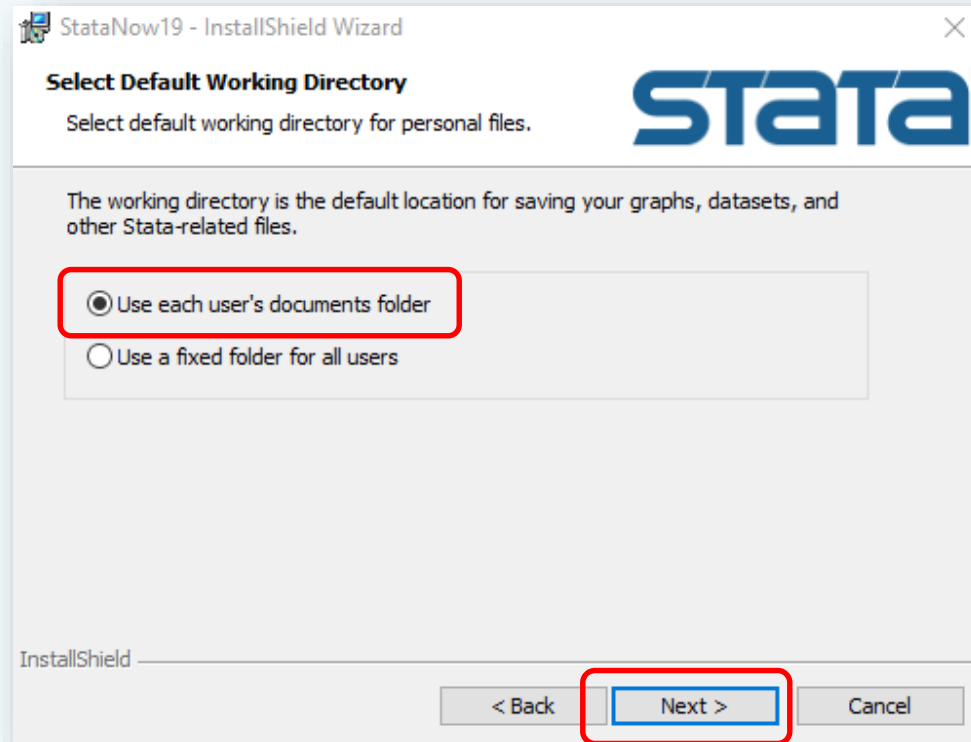
9. Click on **Next**



2. Installation Procedure

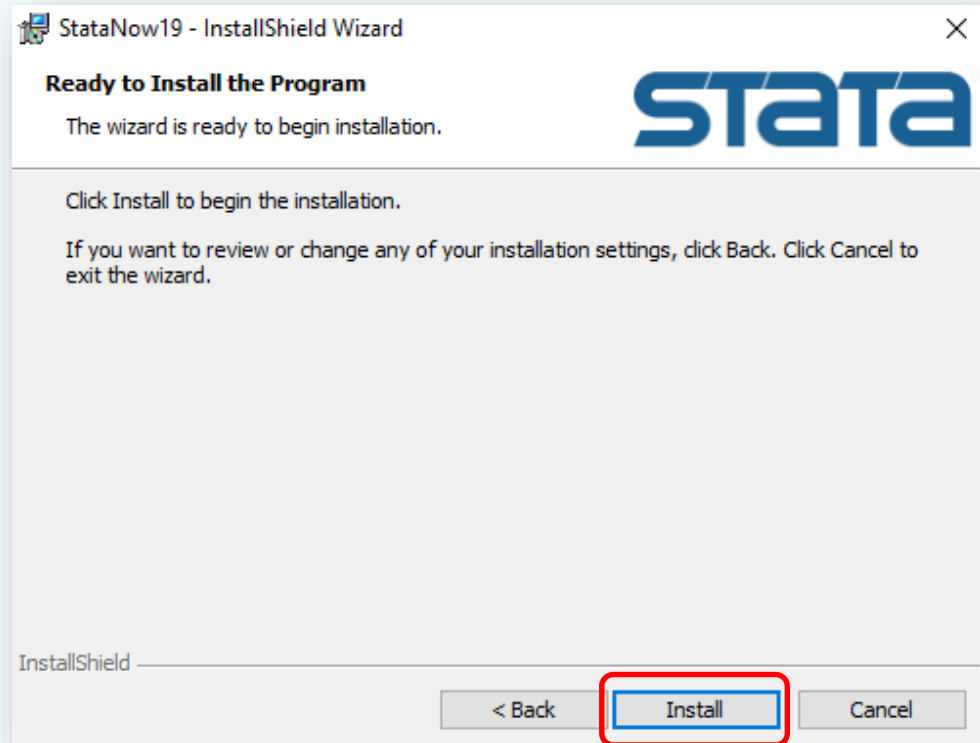
10. Select **Use each user's documents folder**

11. Then Click on **Next**



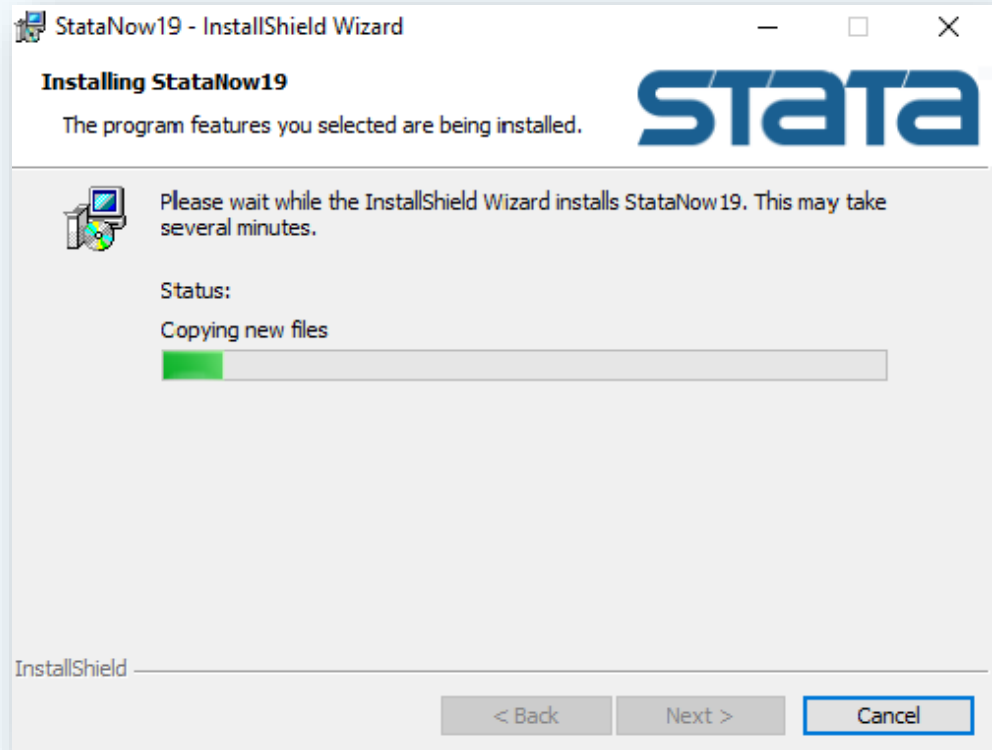
2. ขั้นตอนการติดตั้ง

12. You are ready to install the application! Click on **install** to proceed with the installation.



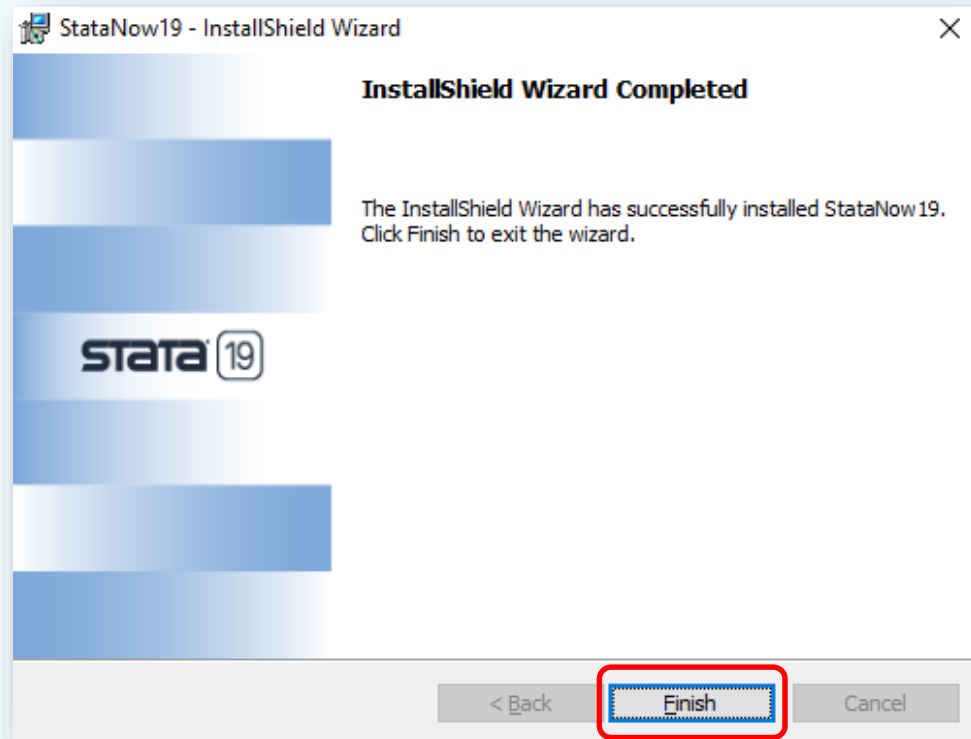
2. Installation Procedure

13. After that, you will see the progress bar as Stata completes the installation. This may take a few minutes.



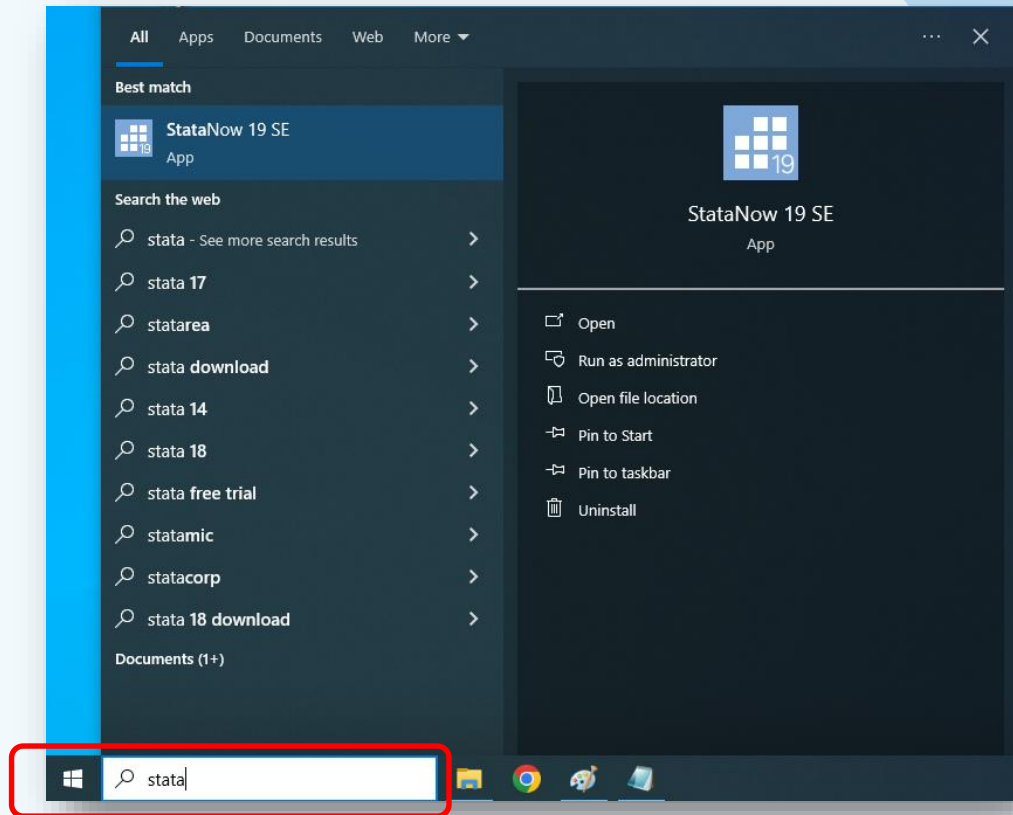
2. ขั้นตอนการติดตั้ง

14. When StataNow/SE 19 has finished installing, click on **Finish** to exit the installer.



3. License Procedure

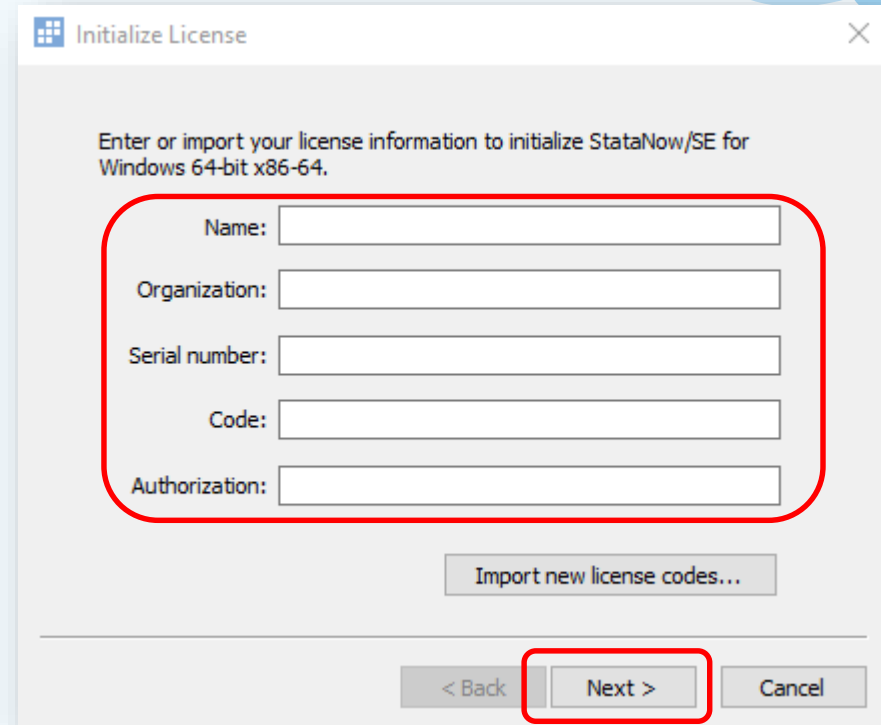
15. Searching for Statanow



3. License Procedure

16. Enter your name (at least five characters) and your organization (at least five characters). Then, enter the **Serial Number, Code, and Authorization**

from the License and Activation Key you received from Staff. Copy and pasting the information is recommended.



Initialize License

Enter or import your license information to initialize StataNow/SE for Windows 64-bit x86-64.

Name:

Organization:

Serial number:

Code:

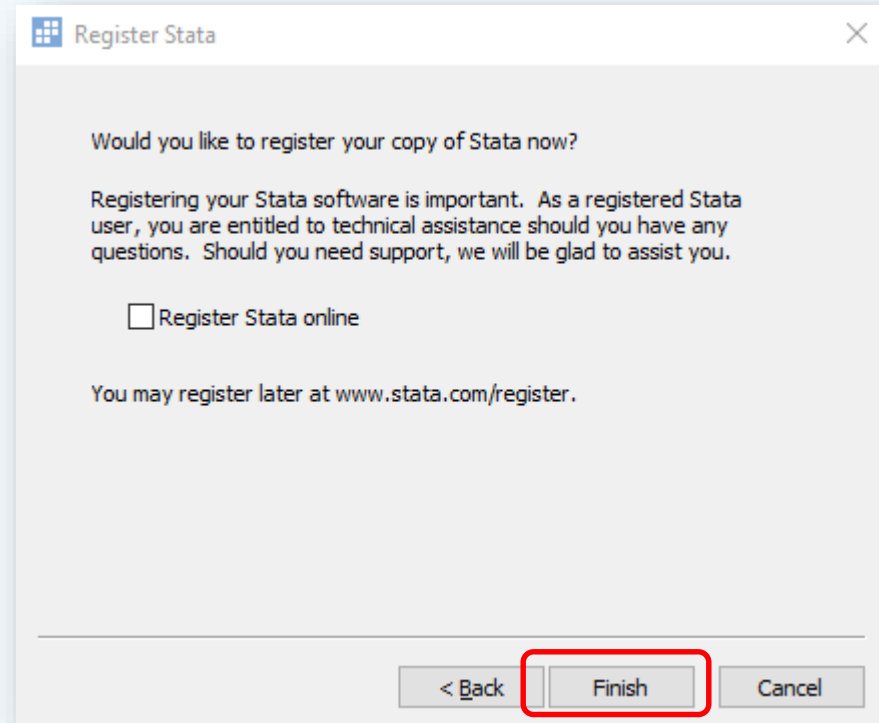
Authorization:

Import new license codes...

< Back Next > Cancel

3. License Procedure

17. Next click on **Finish** to complete the installation and register your copy of Stata.



Successfully Installed!

Congratulations!

You have successfully installed **StataNow/SE 19!**

StataCorp LLC. Stata installation guide for Windows: running the installation [Internet]. 2025 [cited 2025 Apr 25]. Available from: <https://www.stata.com/install-guide/windows/installation/>

StataCorp LLC. Stata installation guide for Windows: setting up the license [Internet]. 2025 [cited 2025 Apr 25]. Available from: <https://www.stata.com/install-guide/windows/license/>

StataNow™ Update

Users who have Stata 18 or 18.5 installed,
uninstall it first.

After that, StataNow/SE 19 can be installed.

